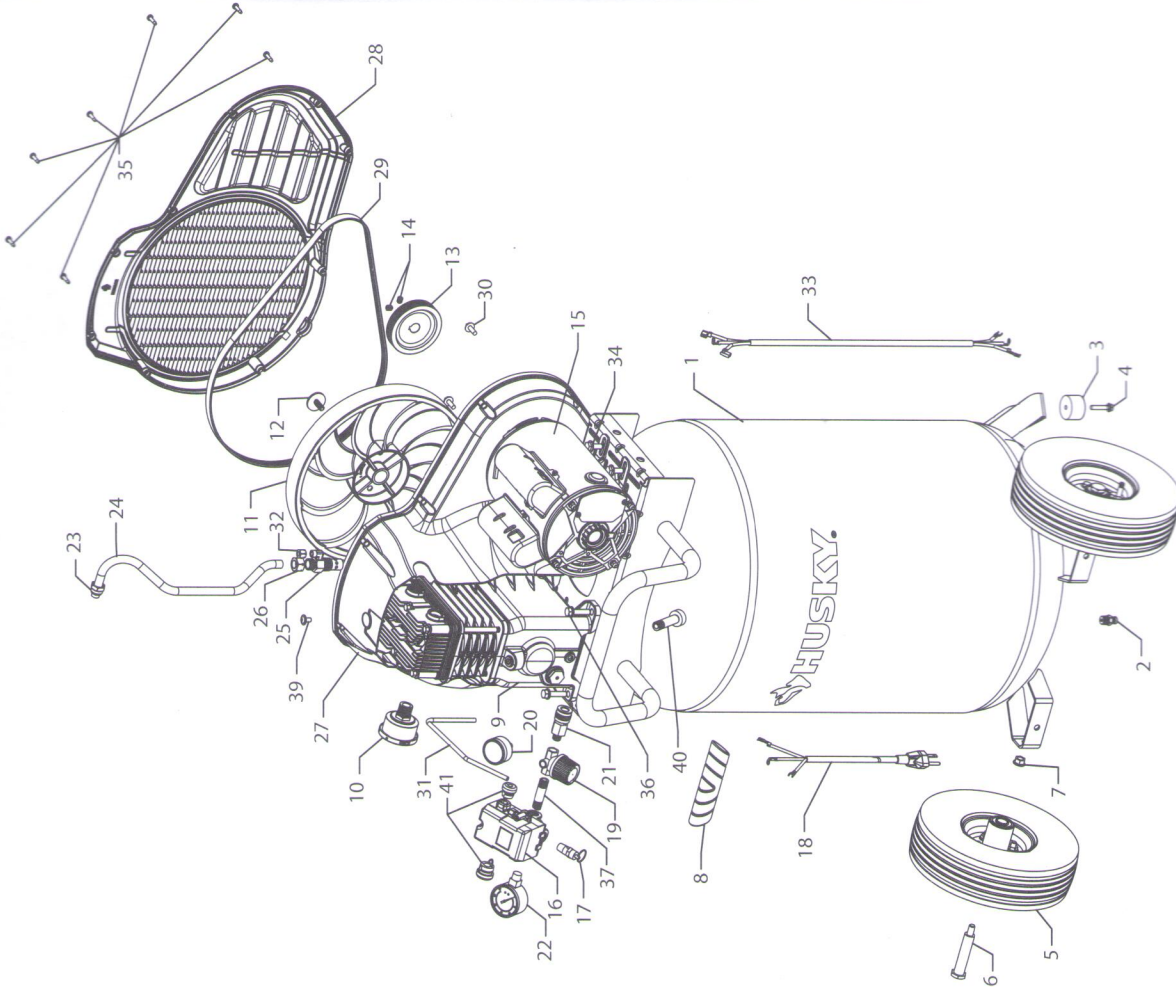


Service Parts

C304H AIR COMPRESSOR



Service Parts (continued)

C304H AIR COMPRESSOR

Item Number	Description	Qty.	Part Number
1	Tank 30 Gal, VP Black	1	E112733
2	Valve Drain .25 NPT	1	E109170
3	Bumper Rubber Foot (Kit of 2)	2	E107323
4	Screw .250-20 X 1.125 (Kit of 3) - Torque snug	2	E108095
5	Wheel 10" Pneumatic (Kit of 2)	2	E107324
6	Bolt Shoulder .375-16 X 3.40 (Kit of 2) - Torque 15-25 ft.-lbs.	2	E107325
7	Nut .375-16 Hex (Kit of 2)	2	E106640
8	Grip, Handle	1	E112762
9	Pump i6	1	E110539
10	Air Intake Filter Assembly	1	E105207
11	Flywheel 12"	1	E110540
12	Screw Sems M8 X 1.25 X 25 mm - Torque 20-24 ft.-lbs.	1	E110541
13	Pulley 3.50" OD x 5/8" Bore (Includes Items 14 & 38)	1	E112254
14	Screw Set 5/16-18 x 3/8 Nyl Patch (Kit of 2) - Torque 145-180 in.-lbs.	2	E110558
15	Motor 2 HP, 120 Volt	1	SEE INSERT
16	Switch Pressure 4 Port 135-175 PSI (Includes Item 41)	1	E112732
17	Valve Safety Relief 200 PSI	1	E108520
18	Assy Cord Power	1	E107331
19	Regulator 4 Port	1	E107332
20	Gauge Regulator 300 PSI 1/8" Back Mount	1	E107333
21	Quick Connect	1	E107334
22	Gauge Tank 300 PSI 1/4" NPT	1	E106005
23	Kit Tube Nut & O-Ring	1	E110548
24	Tube 1/2" Outlet Assembly (Includes Item 23) - Torque 15-25 ft.-lbs.	1	E110544
25	Valve Check 1/2" NPT X 1/2" OD Tube	1	E106027
26	Nut Compression 1/2" OD Tube - Torque 100-200 in.-lbs.	2	E106641
27	Beltguard Inner	1	E111365
28	Beltguard Outer	1	E111364
29	Belt Poly-V 6 Rib 46" (460J6), Belt Tension ~185Hz	1	E112255
30	Screw, 1/4-20 X .750 (Kit of 3) - Torque 40-55 in.-lbs.	3	E106660
31	Tube Pressure Relief	1	E112739