

# MINUTEMAN<sup>®</sup>

## Power Technologies

From Para Systems, Inc.

### SNMP-NET Card Quick Install Procedure

**NOTE:** The SNMP-NET cards are designed to be Hot Swappable, but there is a remote chance that when Hot-Swapping the SNMP-NET card that the UPS will shutdown. MINUTEMAN recommends following steps 1 through 8 when installing the SNMP-NET card, but to hot-swap, skip to step number 3 and omit steps 6, 7.

1. Turn off all the equipment that is plugged into the UPS.
2. Turn off the UPS and unplug the UPS's power cord from the AC wall outlet.
3. Remove the Option Slot cover plate from the rear panel of the UPS.
4. Insert the SNMP-NET card into the option slot and secure with the retaining screws.

**NOTE:** If connecting directly to the SNMP-NET card with a Laptop computer using a crossover cable the DHCP services on the Laptop **MUST** be stopped before proceeding.

5. Connect the Ethernet cable to the Ethernet Port on the SNMP-NET card.
6. Plug the UPS's power cord into the AC wall outlet and turn the UPS on.
7. Turn on all the equipment that is plugged into the UPS.
8. Now the SNMP-NET card is ready to be Setup (see the Setup-Procedure).

### Setup-Procedure

**NOTE:** The minimum requirement to operate the SNMP-NET card is to setup the IP Address, subnet mask, and the gateway. The EzSetting program supports most Windows Operating Systems (Windows 9x, Me, NT4.0, 2000, 2003, XP).

The easiest way to configure the SNMP-NET card is by running the EzSetting program. The EzSetting program is on the CD. Please see the sub-section below for more information.

1. Make sure both the DIP-switches of SNMP-NET card are set to OFF position (default: normal mode) to enable network transmission.
2. Make sure the workstation and SNMP-NET card are in the same LAN.
3. Put the CD (provided) in the CD-ROM drive and find the SNMP-NET EzSetting program then launch it.
4. Press the Discover button to search for all of the SNMP-NET card's in the LAN. All of the SNMP-NET cards will be listed in the Device List. (See Figure 2-1)

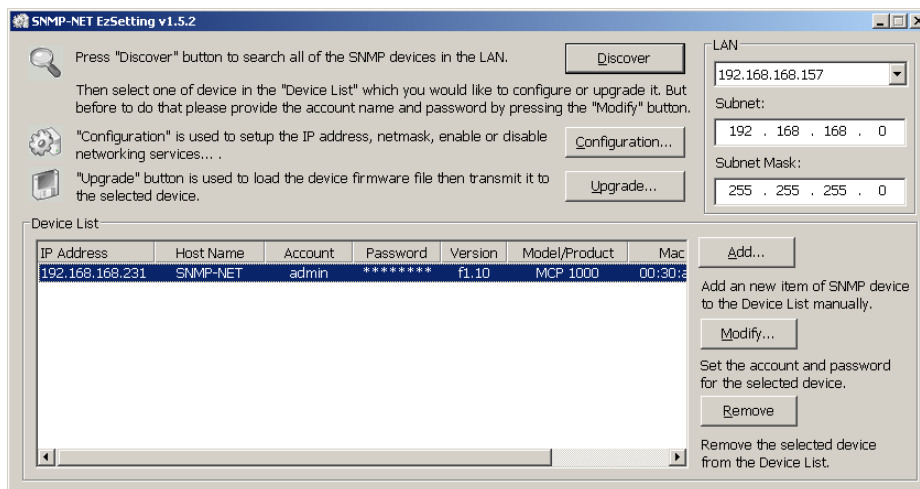
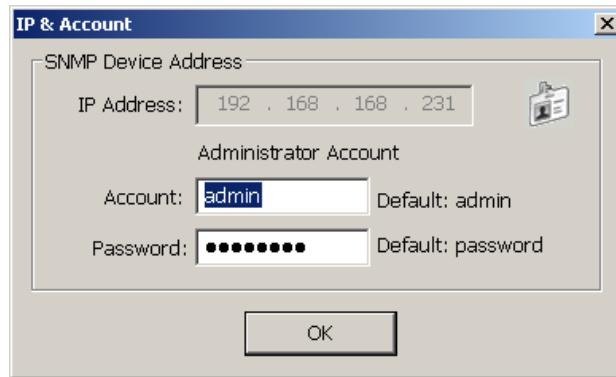


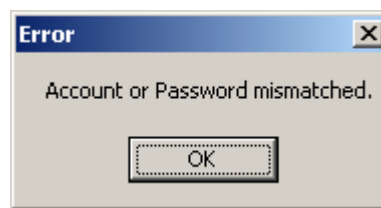
Figure 2-1 EzSetting screen.

5. If the SNMP-NET card cannot be found, check the networking port UDP 3456 in the OS. Open it if it is blocked.
6. Select the device in the device list then press the **Modify** button to provide your Account name and Password. The default Account name and Password are **admin** and **password**. (See Figure 2-2)



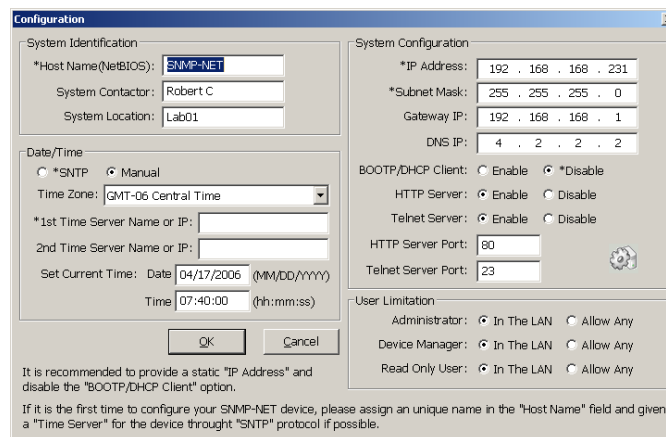
**Figure 2-2 Provide the Account name and Password.**

**NOTE:** The **MODIFY** button must be selected and the Account name and Password must be entered before Configuring or Upgrading the SNMP-NET card. If the Error message in Figure 2-3 appears, click OK then select the **MODIFY** button and enter the Account name and Password then proceed with Step 7.



**Figure 2-3 Error message.**

7. Click on the Configuration button and setup the essential network parameters. (See Figure 2-4)



**Figure 2-4 Configure the system parameters.**

8. Once the SNMP-NET card installation and setup-procedure is complete, you are now able to monitor and control the SNMP-NET card via a Web Browser.
  - A. Open a Web Browser (Netscape, Internet Explorer, Opera, Firefox).
  - B. Enter the SNMP-NET card's IP Address.
  - C. Enter the Account name (**admin**) and Password (**password**).
9. This completes the installation of the SNMP-NET SNMP card. See the SNMP-NET card User's Manual for more detailed information.