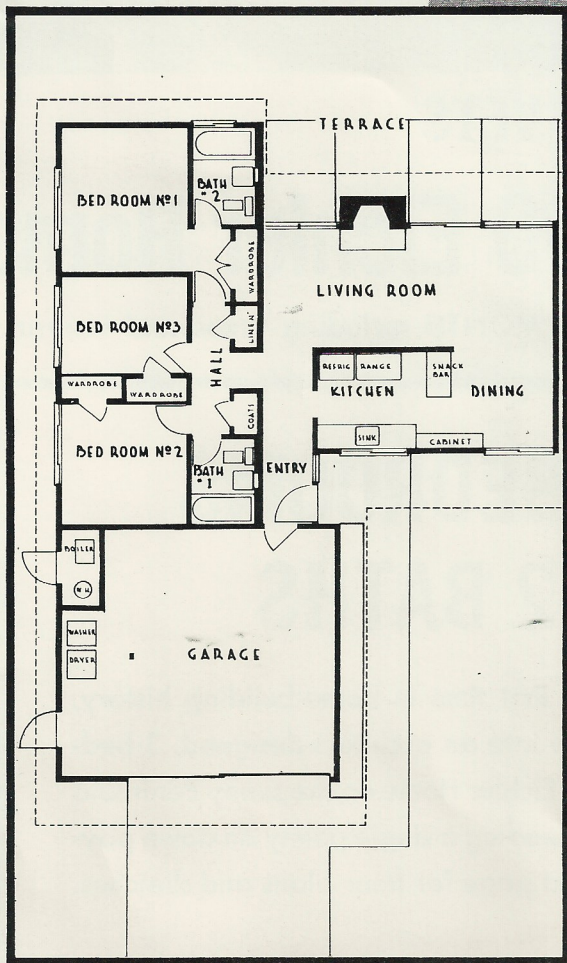
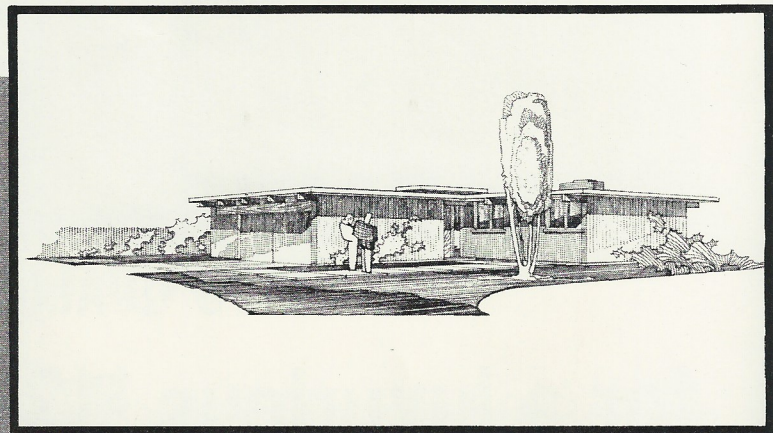


Choose Your Plan... Choose Y

NO DOWN PAYMENT



PLAN 502 Here's a plan "built to order" for the sunny Peninsula. Notice the spacious terrace—separated from the living room by floor-to-ceiling glass walls and Arcadia sliding doors. Notice, too, the step-saving kitchen with its Micarta-covered snack bar and its over-the-counter window commanding a view of the front yard and entryway. Entry hall permits access to bedroom unit without passing through living area.



PRICE INCLUDES ALL THESE "CUSTOM" FEATURES

- Engineered radiant heating
- Wood-paneled walls throughout
- Beamed ceilings; insulated roofs
- Sliding glass doors; concrete patios
- Big 2-car garage
- G.E. Electric range; ventilating fan
- Architectural design that has won for Eichler Homes more awards and more national acclaim than any other builder in America!

