

Monta Loma Area: Friendly, Growing

Plans for future development in the Monta Loma School area, and the naturally friendly and cooperative atmosphere that prevails, make it one of the most desirable residential areas in the City of Mountain View.

Although four separate housing tracts surround the school, the area has more or less fused into a single residential district with the school acting as focal point for the activities of its residents.

At the hub of the residential area which surrounds it, Monta Loma School, and the adjoining park, provides much of the source of activity for the area.

The four housing developments which make up the Monta Loma area are Oakwood, Mardell Manor, Fairview and Sunshine Glade.

Despite a lack of formal internal organization, the area is not without its voice in the public affairs which affect it.

The newly-formed Citizens for Mountain View group already has gained considerable support in the area. Eleven residents are now active in the group, four of whom serve on its board of directors.

Mrs. Claire Barr, 2465 Benjamin dr., is secretary of the new organization. Other directors are Dave Wolgast, 235 Diablo ct., Al Miller, 241 Diablo ct., and John Stinehelfer, 137 Palmer ave.

Until recently concerned with organizing, the group will now specialize under committee headings to work for the improvement of the city.

Membership in the Monta Loma P-T-A is especially strong. With about 600 students enrolled in the school, 410 parents and teachers now belong to the organization.

Cooperative action has resulted in completion of the Monta Loma Little League Baseball Park and establishment of a school library

(the first of its kind in the area) without the use of school funds.

When it was announced that application had been made to build a skating rink near the housing developments, on the Palo Alto side of the border, residents of the area trooped to Palo Alto to protest its establishment.

Although the protest came from outside its own city, the Palo Alto City Council denied the developer permission to build the rink.

At present there are approximately 658 occupied homes in the area. MacKay Homes recently completed 89 more, and Mardell Homes plans 79 additional units which will bring development to 826.

The earliest development, Fairview, was started in 1953, Sunshine Glade in 1954, Oakwood in 1955 and Mardell in 1956.

A full house in the schools in the area is assured for some time. There are nearly 550 elementary school-age children living in the

four tracts and high school students push the total past 600.

In the city's preliminary general plan, the area is earmarked for easy access to shopping, recreation, schools and the rest of the Peninsula.

The city right now is negotiating for a 23-acre district park site to be located on the southeast corner of Rengstorff ave. and Alma st. City officials look for early acquisition and development.

The facilities there, such as picnic area, ball diamond, and multi-purpose building will place Monta Loma residents within easy reach of recreational areas.

A four-acre commercially-zoned parcel has been set aside on the northwest corner of that intersection. Zoning provides for a neighborhood type of development. For more extensive shopping, residents are close to downtown and San Antonio rd. shopping areas.

All of the major arterials servicing the area are slated for improvement. San Antonio rd. will be widened to six lanes with an interchange at Bayshore highway.

Alma st., scheduled now for widening to 90 feet, may be extended to a 100-foot expressway with six lanes. The Middlefield rd. extension, which will swing past the north of the subdivisions also will be a six-lane thoroughfare.

Work on the San Antonio rd. interchange is scheduled by the state sometime this summer. Action on the regional park by the city is expected this fall while early starting date on the Middlefield rd. extension is anticipated.

Other areas which will develop in the future include a 20-acre professional and administrative zone at the northeast corner of San Antonio and Alma.

A six-acre plot along Rengstorff, north of Alma, owned by the Archdiocese of San Francisco is slated as a parochial school site.

(Photos and text by Edward N. Pope)

Residents Work To Develop Park

The recent official dedication ceremonies held at the Monta Loma Park culminated two years of cooperative effort on the part of residents, and recreation and school officials.

The park, located adjacent to Monta Loma School, is complete in its first phase. Development of the remainder is underway with the installation of sprinklers for the undeveloped portion.

The park occupies five and a half acres of the 10-acre school site. Whisman District owns the land and leases the park to the city for recreational use for one dollar per year.

All of the work completed thus far in developing the facilities has been done by city work crews and interested residents of the school area.

Residents Pitch In
Residents, anxious to have their own nearby park facilities, have pitched in and contributed immensely to its completion.

Evenings and weekends of many have been devoted to the installation of the first phase sprinkler system and construction and erection of the chain link backstop which surrounds home plate.

Little League officials who were instrumental in the project include President Scotty MacGibbon, a member of the city recreation commission, Phil Hargrove, vice president, James Blaine, secretary, and Tony Herauf, treasurer.

Original Planning
Much of the original planning was done by Supt. Arthur Tindall, of the Whisman District.

The number of residents of the entire area, however, both members and non-members of the Little League organization, who helped on the project could not be counted.

Opening of the ball diamond there now provides a playing field for Little and Minor League teams of the American League organization which draw boys from the Whisman District.

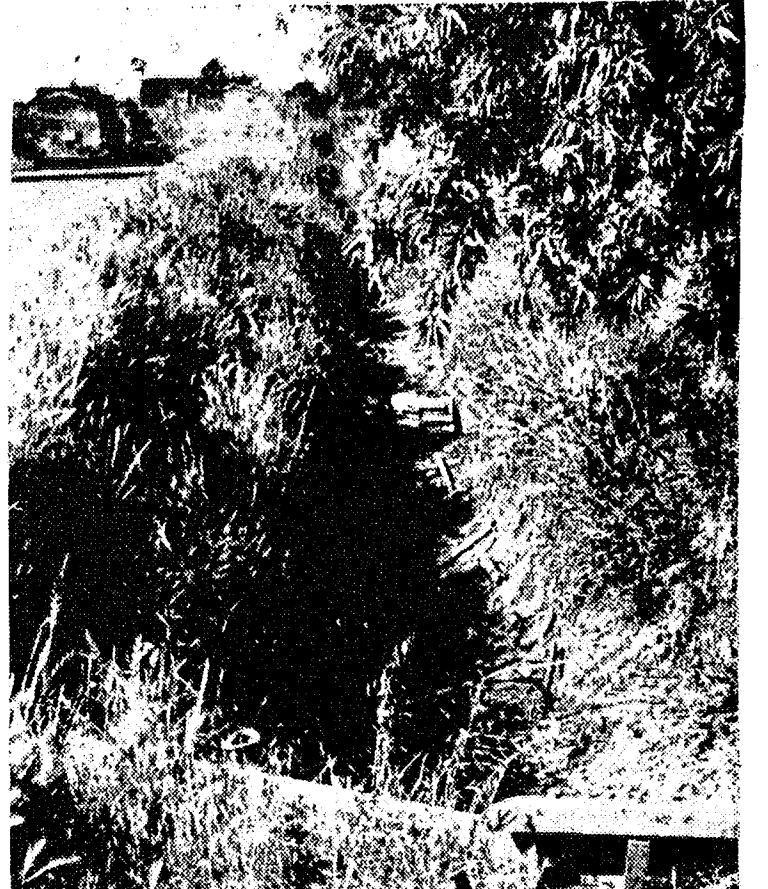
Until the field was completed, all games had to be played at the city's McKelvey Park facilities. This caused crowding of the two city leagues' schedules.

Park Costs
Second phase of the park will include a tiny-tot lot, barbecue pits and picnic tables, horseshoe pits and shuffleboard, in addition to landscaping.

SPRINKLER PIPE installation at Monta Loma Park was accomplished by residents of the area in developing the Little League baseball diamond. Weekend workers included (foreground, left to right) Jim Blaine, Scotty MacGibbon, Arthur Tindall, Whisman superintendent, and Ricky MacGibbon. Development of the second phase is underway.



FLOOD WATERS which plagued residents of the Fairview tract throughout the winter (left, above) may be a thing of the past if the city is able to obtain permission to use an abandoned county drainage ditch as temporary relief measure (above, right). A \$674,000 drainage project is planned for the area, but lack of funds have held up its realization.



abandoned county drainage ditch as temporary relief measure (above, right). A \$674,000 drainage project is planned for the area, but lack of funds have held up its realization.

City Seeks County Ditch Use for Flood Relief

Flooded streets which plagued the Monta Loma School area, and especially the Fairview tract, last winter may be a thing of the past if the city engineer's office is able to put its drainage plans into effect.

In the meantime, the city is investigating the possibility of using an old county drainage ditch, long abandoned to carry the runoff from the Monta Loma area to the bay.

The ditch is located on the north side of Middlefield rd., just east of the Alvin st. intersection.

However, even if the county grants the city the use of the ditch, a great deal of work on the project will have to be done. Weeds and erosion have closed it off in places.

McKinnon said the \$300,000 earmarked from the recent \$10 million bond issue is not nearly enough for the three or four projects which need immediate attention.

The Monta Loma area project alone will cost \$674,000, he said. The plan calls for extension of two huge drainage lines along Rengstorff ave. and west of Independence ave. to Bayshore highway.

A 25-foot easement from Bayshore to the bay has been obtained and the ditch dug. The project is being held up by a lack of funds with which to connect lines at Rock ave. with the one at Bayshore.

A 42-inch pipe has been installed under the highway and the contract let for an 81-inch pipe. Each subdivision has storm drains, but the problem is to get the water from Rock ave. to the bay.

McKinnon said the problem is complicated by much of the land being outside of the city limits. This prevents the city from forming an assessment district as county areas would benefit by the project, but would not be sharing in the cost.

GREAT AMERICAN pastime is practiced at the Monta Loma Park where Little League baseball holds forth. The diamond was developed with the help of residents.



PARENTS AND TEACHERS cooperate to bring library facilities to Monta Loma School. Mrs. Raymond Flanagan (behind cart), parent, and Miss Patricia Terry, second grade teacher, help (left to right) James Newman, Joseph Segna and Karen Wheatland check out books.

Parents, Teachers Provide School with Library Books

Lack of funds for library facilities at Monta Loma School hasn't stopped parents and teachers of the children there from providing this necessary educational aid.

When it was determined that the facilities of the Santa Clara County mobile library were not adequate residents and teachers alike began a cooperative effort to supplement and finally replace the county library.

Since it went into operation in March of 1957, the library, under the direction of its own steering committee, has grown until there are 600 books available for the use of the children.

Funds are on hand for the purchase of more books and 100 additional volumes will be added to the library.

Cost \$2.50
Cost of the average book is \$2.50 and is offset by various fund-raising projects which are sponsored by the library committee.

The steering committee, of which Principal John Pomeroy is adviser, is composed of Mrs. Jack Wheatland, 2445 Marjorie ct., committee chairman; Mrs. Mary Schwartz, first grade teacher, who is administrative chairman; her assistant Mrs. Marlene Gevarter, kindergarten teacher.

Mrs. Janet Hall, first grade teacher, who acts as secretary; Joseph Segna, 2430 Alvin ct., treasurer; Mrs. Phillip Hargrove, 2352 Craig ct., workshop chairman; Miss Patricia Terry, second grade teacher, publicity chairman; and Mrs. Raymond Flanagan, 2464 Elka ave., ways and means chairman.

Visit Each Week
Operation of the library is under Mrs. Schwartz who directs 20 parents assisting in the circulation of the books. Each room in the school is visited by the library's mobile cart for one hour each week. Students are allowed to select and check out books.

Mrs. Schwartz also collects suggestions from the faculty and draws lists for new books.

Workshop Chairman Mrs. Hargrove is in charge of processing new books and mending the old. She has about 20 parents on her committee who devote their evenings to the project.

The library is presently housed on the mobile cart which was built by an interested parent. In the future the committee hopes to acquire space in Monta Loma's proposed multi-purpose room for the library.

Movies Shown
The ways and means committee is responsible for providing funds for new books for the library. Each Saturday a full-length feature movie is shown at the school under the supervision of parents and teachers. Admission for the children is 25 cents.

Other fund raising methods include the annual faculty fashion show with admission proceeds going to the library. Local merchants provide apparel for the show.

Additional books have been added to the library by donation of parents in the names of their children. This practice is being continued and the names of the donors appear on the book plate.

Cultural Activities
The library group also carries on cultural activities which are designed more to stimulate the children than to raise funds.

The organization boasts an active membership of between 30 and 40 persons and is the first of its kind to appear in local schools.

Since its organization, other parent-teacher groups have recognized its value and similar projects are under way at other schools.