

CONTACT INFORMATION

- Website: www.supermicro.com
- General Information: marketing@supermicro.com
- Technical Support: support@supermicro.com
- Phone: +1 (408) 503-8000, Fax: +1 (408) 503-8008

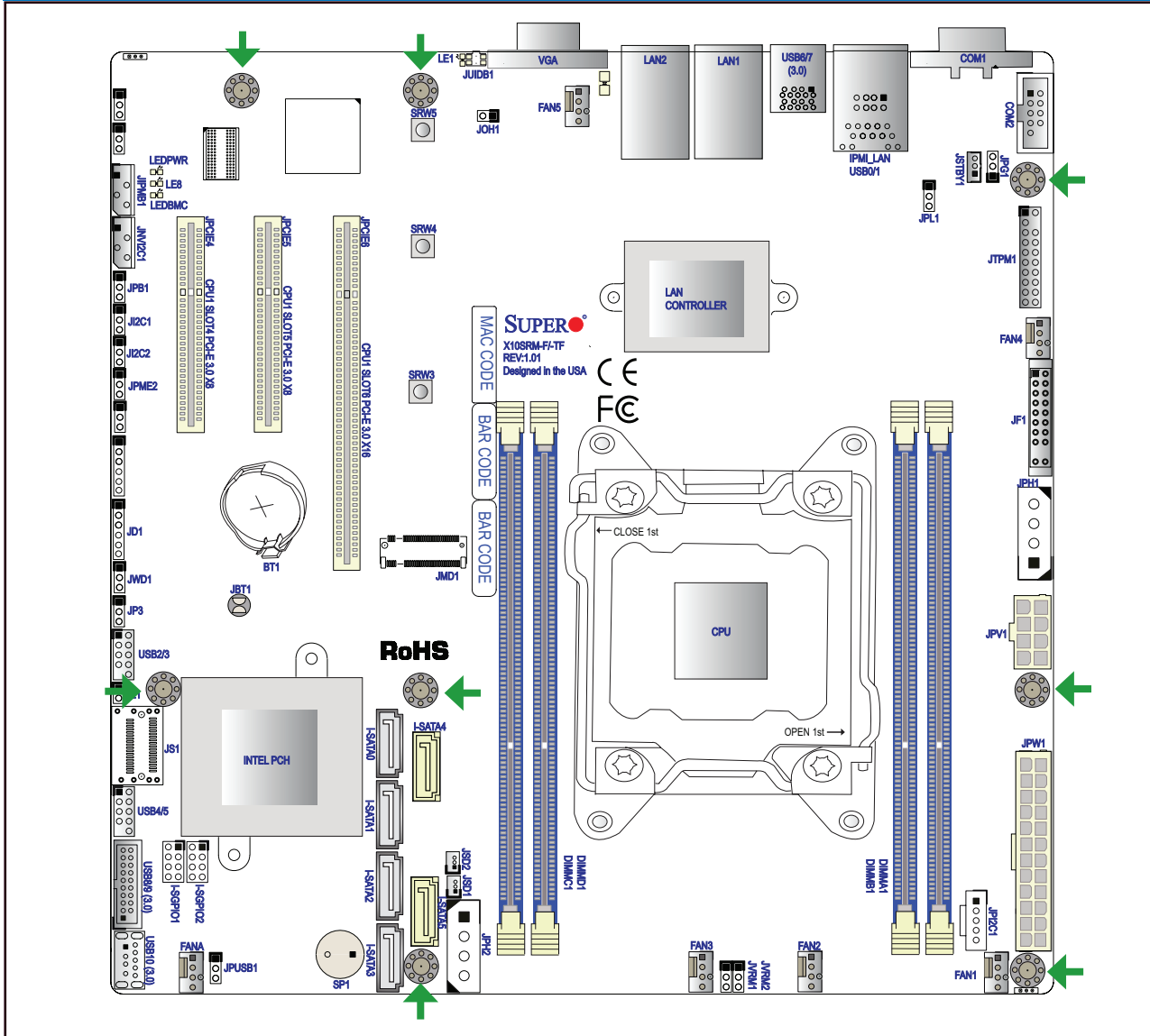
FOR YOUR SYSTEM TO WORK PROPERLY, PLEASE DOWNLOAD APPROPRIATE

- DRIVERS/IMAGES/USER'S MANUAL FROM THE LINKS BELOW:**
- Manuals: <http://www.supermicro.com/support/manuals>
 - Drivers & Utilities: ftp://ftp.supermicro.com/CDR_Images/CDR-X10-UP/
 - Safety: http://www.supermicro.com/about/policies/safety_information.cfm

PACKAGE CONTENTS

- One (1) Supermicro Motherboard
- Six (6) SATA Cables
- One (1) I/O Shield
- One (1) Quick Reference Guide

Motherboard Layout and Features



Jumpers and Connectors

Jumpers		
Jumper	Description	Default
JBT1	Clear CMOS	Short: Clear CMOS, Open: Normal
JPC1/JPC2	SMB to PCI Slots	Pins 2-3 (Disabled)
JP3	M.2 Slots I°C Enable/Disable	Pins 1-2 (Normal)
JPB1	BMC Enable/Disable	Pins 1-2 (Enabled)
JPG1	VGA Enable/Disable	Pins 1-2 (Enabled)
JPL1	LAN1/LAN2 Enable/Disable	Pins 1-2 (Enabled)
JPME2	Manufacturing Mode Select	Pins 1-2 (Normal)
JPUSB1	USB Wakeup	Pins 1-2 (Enabled) (For USB4/5/8/9 only)
JVRM1	VRM SMB Clock (to BMC or PCH)	Pins 1-2 (BMC, Normal)
JVRM2	VRM SMB Data (to BMC or PCH)	Pins 1-2 (BMC, Normal)
JWD1	Watch Dog	Pins 1-2 (Reset)

Connectors	
Connector	Description
BT1	Onboard Battery
COM1/COM2	COM Port, COM Header
FAN1 ~ FAN5, FANA	CPU Fan Headers, System Fan Headers
IPMI_LAN	Dedicated IPMI LAN Port
I-SATA0 ~ I-SATA5	Intel® PCH SATA 3.0 Ports
I-SGPIO1/I-SGPIO2	Serial Link General Purpose I/O Connection Headers
JD1	Speaker/Power LED Indicator
JF1	Front Panel Control Header
JIPMB1	4-pin BMC External I°C Header (for an IPMI Card)
JL1	Chassis Intrusion Header
JMD1	M.2 Socket
JNVI2C1	NVMe I°C Header
JOH1	Overheat LED Indicator
JPCIE4	CPU PCI-E 3.0 X8 (in X8) Slot
JPCIE5	CPU PCI-E 3.0 X8 (in X8) Slot
JPCIE6	CPU PCI-E 3.0 X16 (in X16) Slot
JPH1/JPH2	4-pin Power Connectors for HDD use
JPI2C1	Power I°C System Management Bus (SMB) Header
JPV1	8-pin Power Connector
JPW1	24-pin ATX Power Connector
JS1	iPass Connector
JSD1/JSD2	SATA DOM Power Connectors
JSTBY1	Standby Power Header
JTPM1	Trusted Platform Module/Port 80 Connector
JUIDB1	UID Switch
LAN1/LAN2	LAN (RJ45) Ports
SP1	Internal Speaker/Buzzer
SRW3	M.2 42mm card holding screw
SRW4	M.2 80mm card holding screw
SRW5	M.2 110mm card holding screw
USB0/1	Back Panel Universal Serial Bus (USB) 2.0 Ports
USB6/7	Back Panel USB 3.0 Ports
USB2/3, USB4/5	USB 2.0 Headers
USB8/9	Front Accessible USB 3.0 Header
USB10	USB 3.0 Type A Header
VGA	VGA Port

LED Indicators

LED Indicators			
LED	Description	Color/State	Status
LE1	Rear UID LED	Blue: On	Unit Identified
LE8	HDD Access LED	Green: On	HDD Detected
LEDBMC	BMC Heartbeat LED	Green: Blinking	BMC Normal
LEDPWR	Onboard Power LED	Green: Solid On	Power On

CPU Support

Intel® Xeon E5-1600 and E5-2600 v3/v4 series processors in an LGA 2011 socket.

Memory Support

The X10SRM-F/-TF has four (4) 288-pin DIMM slots that support up to 128GB of 2133MHz RDIMM or 256GB of 2400MHz DDR4 ECC memory. E5-1600 and E5-2600 v3 series processors can support up to 2133MHz DIMM; E5-2600 v4 series processor can support up to 2400MHz DIMM.

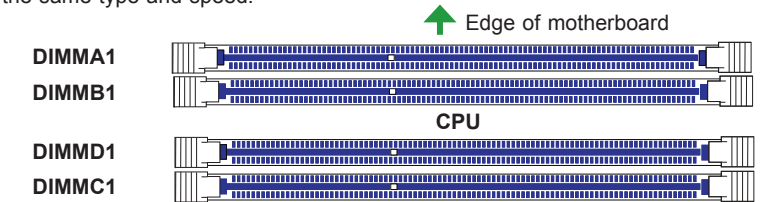
DIMM Memory Installation

Memory Population Guidelines

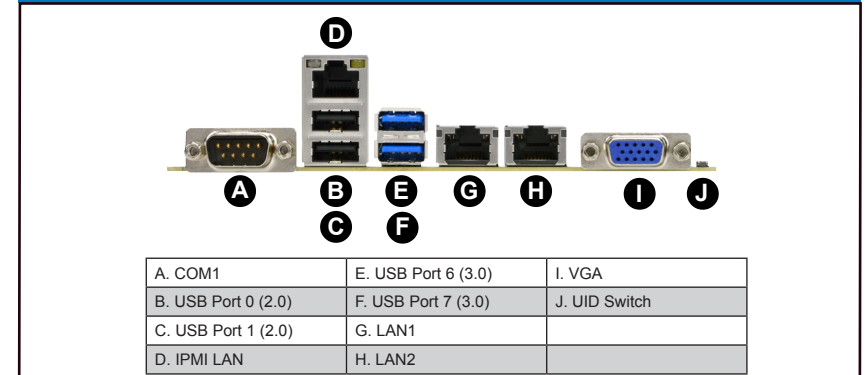
Please follow the table below when populating the X10SRM-F/-TF:

Memory Module Population						
DIMM Slots per Channel	DIMM Type	POR Speeds (MHz)	Ranks per DIMM	Layer Count	FW Base	Supported Voltage
1	DDR4 ECC	2400 (LRDIMM), 2133, 1866, 1600, 1333	SR, DR	6	SPS	1.2V ¹

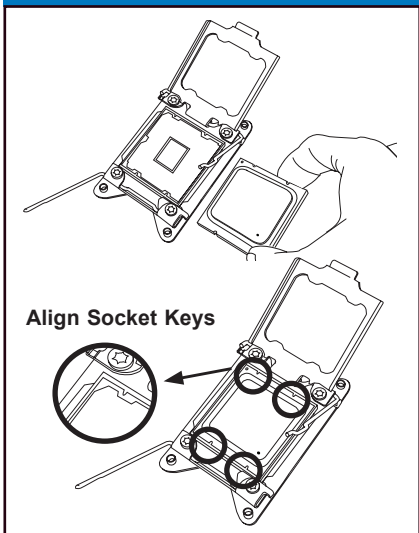
Insert the desired number of DIMMs into the memory slots. The DIMM slots should be populated in the following order: DIMMA1, DIMMB1, DIMMC1, DIMMD1. For the motherboard to work properly, please use memory modules of the same type and speed.



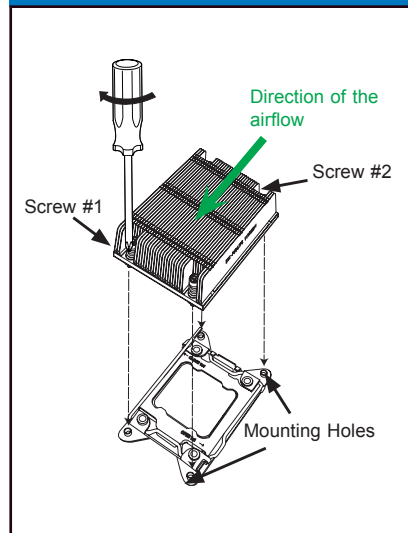
Back Panel I/O Connectors



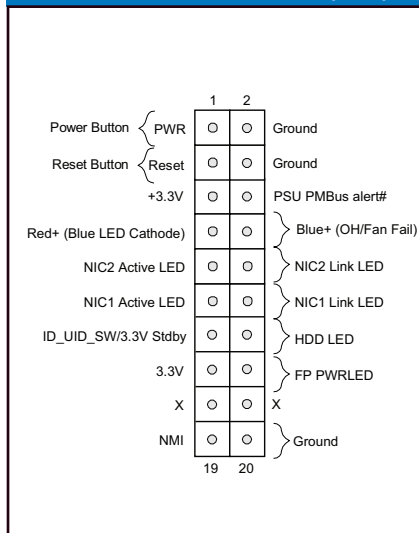
CPU Installation



Heatsink Installation



Front Panel Control (JF1)



Note: Graphics shown in this quick reference guide are for illustration only. Your components may or may not look exactly the same as drawings shown in this guide.

Note: Refer to Chapter 1 of the User Manual for detailed information on jumpers, connectors, and LED indicators.

Note: Refer to Chapter 2 of the User Manual for detailed information on memory support and CPU/motherboard installation instructions.