

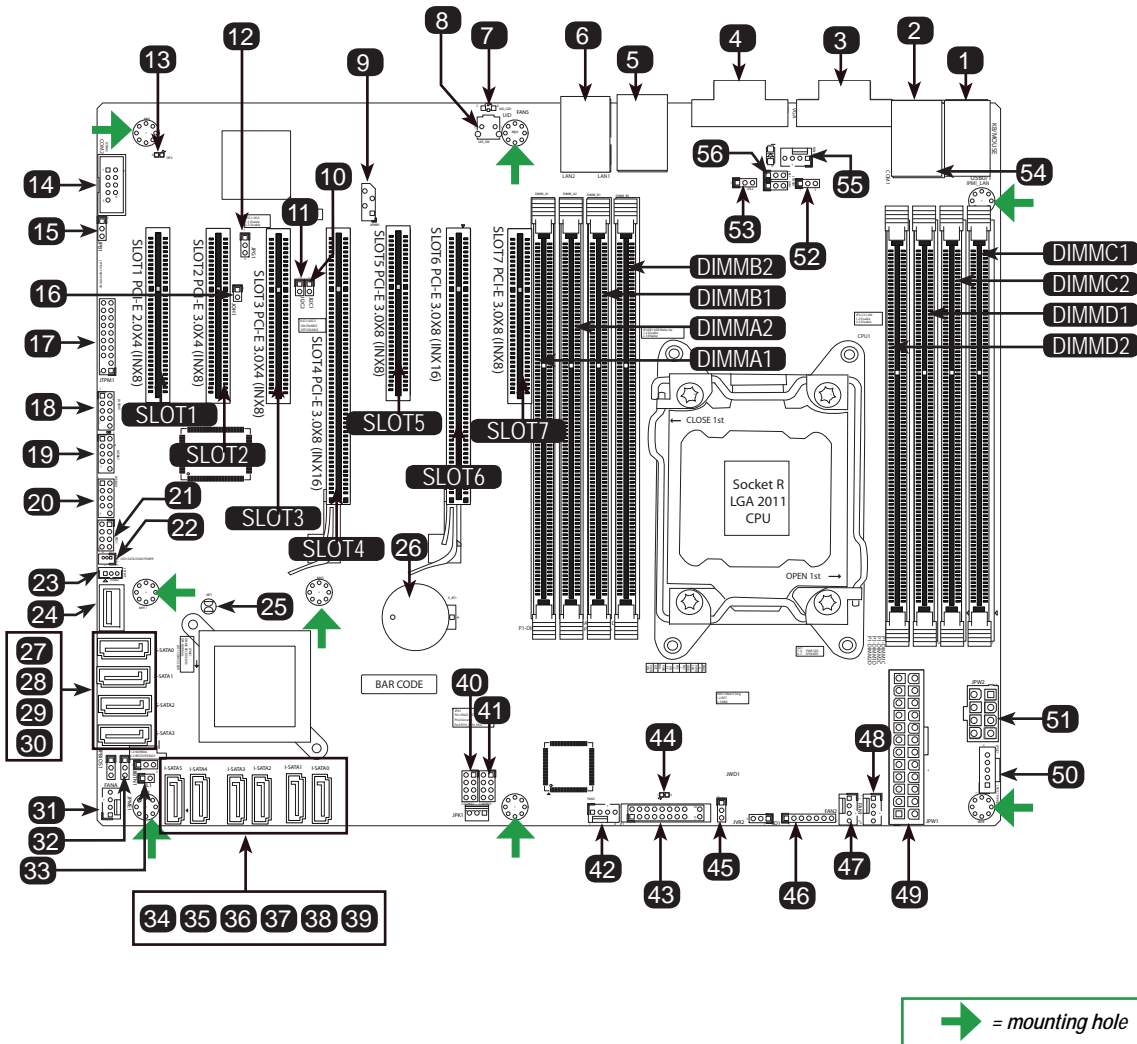
**CONTACT INFORMATION**

- www.supermicro.com (Email: support@supermicro.com)
- Manuals: http://www.supermicro.com/support/manuals
- Drivers & Utilities: ftp://ftp.supermicro.com
- Safety: http://www.supermicro.com/about/policies/safety\_information.cfm

**PACKAGE CONTENTS** (Applies to individual-pack only)

- One (1) Supermicro Motherboard
- Eight (8) SATA Cables
- One (1) I/O Shield
- One (1) Quick Reference Guide

**Motherboard Layout and Features**



**Jumpers, Connectors and LED Indicators**

Jumpers			
Item #	Jumper	Description	Default
8	UID SW	Unit ID Switch	Off (Disabled)
10, 11	J12C1 / J12C2	SMB to PCI Slots	On (Enabled)
12	JPG1	Onboard VGA Enable	Pins 1-2 (Enabled)
15	JPB1	IPMI/BMC Enable (X9SRL-F only)	Pins 1-2 (Enabled)
25	JBT1	Clear CMOS	See Chapter 2 in User Manual
32	JPME1	ME update	Pins 1-2 (Normal)
45	JWD1	Watch Dog Timer Reset	Pins 1-2 (Reset)
52	JPUSB1	USB0/1 Wake Up	Pins 1-2 (Enabled)
53, 56	JPL2 / JPL1	LAN1 / LAN2 Enable	Pins 1-2 (Enabled)

Connectors		
Item #	Connector	Description
1	KB/MS	Keyboard / Mouse Port
2	USB 0/1	Back panel USB ports (USB0 and USB1)
3, 14	COM1/COM2	Serial port (COM1) and header (COM2)
4	VGA	Onboard VGA Port
5, 6	LAN1 / LAN2	LAN1 / LAN2 Ethernet Ports (1Gb)
9	JIPMB1	System Management Bus Header for IPMI
16	JOH1	Overheat LED/Fan Fail
17	JTPM1	TPM header
18, 19, 20	JUSB 4/5, 6/7, 8/9	Internal USB headers (USB4 - USB9)
21	SCU-SGPIO1	Serial Link General Purpose I/O Header
22	JSD1	Disk On Module Power Connector
23	JSTBY1	Legacy Wake On LAN Header
24	JUSB2	Internal Type A USB port (USB2)
26	BT1	Onboard Battery Backup
27, 28, 29, 30	S-SATA0-S-SATA3	Internal SATA ports 0-3 (3Gb/s, RAID 0,1,5,10) via SCU
31	FANA	Thermal fan header for I/O add-on cards
33	JL1	Chassis Intrusion Header
34, 35, 36, 37	I-SATA5-I-SATA2	Internal SATA ports 2-5 (3Gb/s) via PCH
38, 39	I-SATA1-I-SATA0	Internal SATA ports 0-1 (6Gb/s) via PCH
41, 40	T-SGPIO1 / T-SGPIO2	Serial Link General Purpose I/O Headers (5V Gen1/Gen 2)
42, 47, 48, 55	FAN #3, #2, #1, #4	System thermal fan headers (FAN1-FAN4)
43	JF1	Front Panel Control Header
46	JD1	Power LED / Speaker Header (Pins 4-7: External Speaker)
49	JPW1	24-pin Main ATX Power Connector
50	JPI2C1	Power Supply SMBus I2C Header
51	JPW2	8-pin Secondary Power Connector
54	IPMI	IPMI LAN Port (X9SRL-F only)

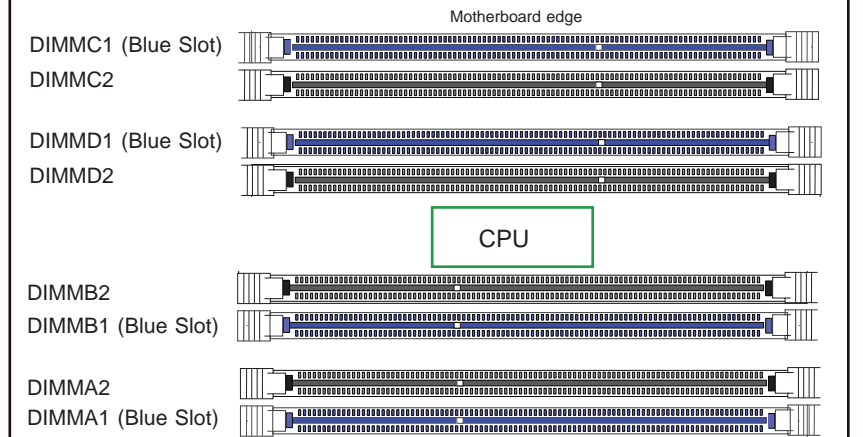
LED Indicators			
Item #	Jumper	Description	Default
7	UID LED	Unit ID LED Indicator	Blue (Steady): UID Switch On
13	DP3	IPMI Heartbeat	Green (Blinking): IPMI Enabled
44	DP2	Power On	Green (Steady): Power On

**Memory Support**

The X9SRL Motherboard Series supports up to 256GB of 1600/1066/1333 MHz ECC/Non-ECC DDR3 DIMMs in eight (8) memory slots (UDIMM/RDIMM).

**Note:** For memory optimization, use only DIMM modules that have been validated by Supermicro. For the latest memory updates, please refer to our website at <http://www.supermicro.com/products/motherboard>.

**DIMM Memory Installation**



**Memory Population Guidelines**

When installing memory modules, populate the DIMM slots in the following order: DIMMA1, DIMMB1, DIMMC1, DIMMD1 then DIMMA2, DIMMB2, DIMMC2, DIMMD2. Populate the blue-colored slots first.

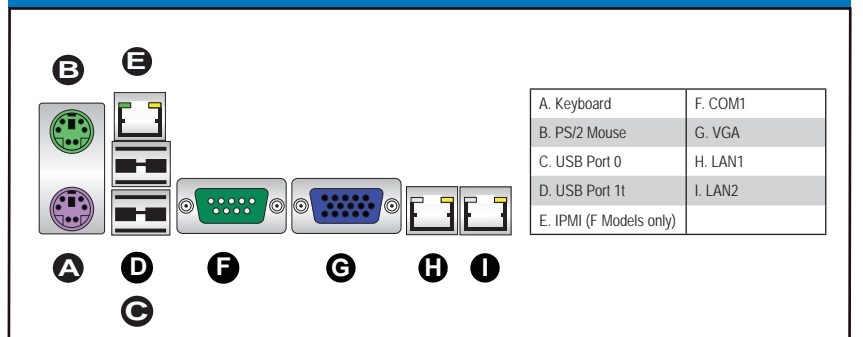
- Always use DDR3 DIMM modules of the same size, type and speed.
- Mixed DIMM speeds can be installed. However, all DIMMs will run at the speed of the slowest DIMM.
- The motherboard will support odd-numbered modules installed (1, 3, 5, or 7 modules). However, for best memory performance, install DIMM modules in pairs.

**Recommended Population (Balanced)**

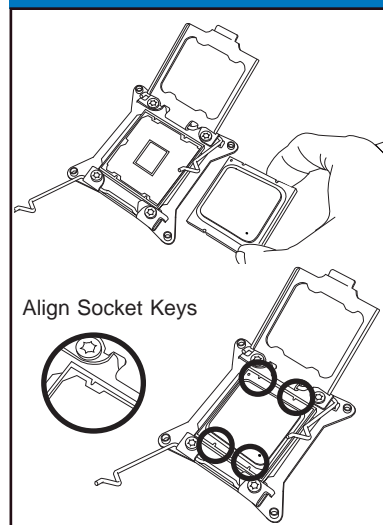
DIMMA1	DIMMB1	DIMMC1	DIMMD1	DIMMA2	DIMMB2	DIMMC2	DIMMD2	Total
2GB	2GB							4GB
2GB	2GB	2GB	2GB					8GB
2GB	2GB	2GB	2GB	2GB	2GB			12GB
2GB	2GB	2GB	2GB	2GB	2GB	2GB	2GB	16GB

**Note:** The motherboard supports up to 256GB of total memory. Please consult the user's manual for more populating options.

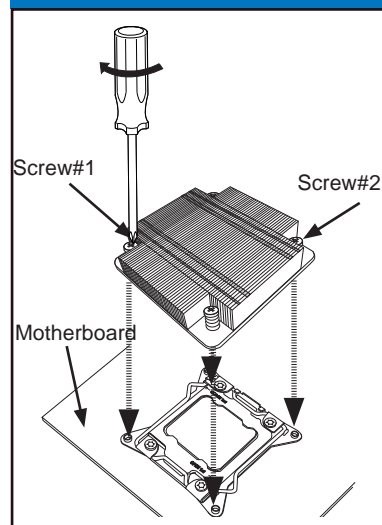
**Back Panel I/O Connectors**



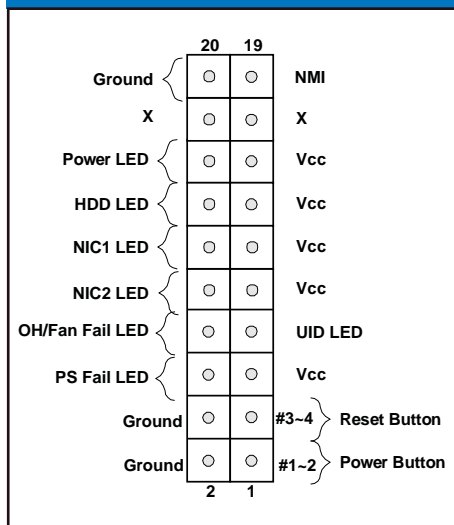
**CPU Installation**



**Heatsink Installation**



**Front Panel Control (JF1)**



**Note:** Graphics shown in this quick reference guide are for illustration only. Your components may or may not look exactly the same as drawings shown in this guide.

**Note:** Refer to Chapter 1 of the User Manual for detailed information on jumpers, connectors, and LED indicators.

**Note:** Refer to Chapter 2 of the User Manual for detailed information on memory support and CPU/motherboard installation instructions.